

Swedish National Report
Recent developments in Corporate Taxation in Sweden

Christian Thomann*

May 8, 2014

Abstract: This article investigates if increasing neutrality between debt and equity capital might improve the efficiency in a corporate tax system. Firm-level and sector-level taxation data from Sweden is used to study if a tax system that is characterized by very few limitations with respect to the deductibility of interest costs leads to systematic differences in the taxes paid by different sectors. There are differences between different sectors and these differences can be explained by the sectors' use of debt capital.

JEL Classification: D58, H25

KEYWORDS: Tax Reform, Corporate Tax, Debt, Equity

* Christian Thomann, CESIS - Centre of Excellence for Science and Innovation Studies, Royal Institute of Technology, Stockholm, Sweden, Christian.Thomann@indek.kth.se

The author thanks Per Classon, Rickard Eriksson, Andreas Högberg, David Kleist, Gustav Martinsson and Bo Stoltz. All errors and omissions are our own. This paper was written in my capacity as a researcher at CESIS and the views expressed and all remaining errors are solely the responsibility of the author.

1 Introduction

During the last few years the corporate tax which is considered to be one of the most harmful taxes for economic growth has received considerable attention on both national and international levels.¹ Sweden is no exception. Here corporate income tax rates were cut in 2009 (from 28 percent and 26.3 percent) and 2013 (to 22 percent). Both rate cuts were accompanied by base broadening measures. In addition to these rate cuts, in 2011, the Swedish administration instituted a Committee on Corporate Income Taxation. The Committee is to deliver a proposal for a comprehensive reform of the corporate income tax system to the Swedish administration by June 2014.² A central element of the Committee's assignment is to reduce the tax burden on risk capital and to increase neutrality between the taxation of debt and equity capital. In addition, the Committee should also propose measures to secure the corporate tax base against erosion (Directive, 2011). At the moment, the Swedish tax system's treatment of debt and equity is non-neutral as it, like many other tax systems, favors debt finance over equity finance. It allows costs associated with debt finance to be deducted against taxable profits. Costs associated with equity capital must be paid from after-tax income.

Other examples where the corporate income tax has received some considerable attention from academics and legislators are the, among others, the United Kingdom and Norway. In the United Kingdom the report Tax by Design: the Mirrlees Review (2010) proposed a tax reform where the corporate income tax was considered one of the key taxes to increase economic growth. Notably the corporate income tax reform suggested by Mirrlees (2010) was to narrow the difference in the tax treatment of debt and equity capital. In Norway a tax commission is to deliver a reform proposal in the fall of 2014.³ Moreover, the OECD has issued an action plan to address the challenges that the present corporate income tax system faces as a result of increasing internationalization of production processes and the increasing importance of the digital economy. Both give corporations possibilities to shift corporate income from high tax jurisdictions to low tax jurisdictions (OECD, 2013). On the European level the European Commission has presented a proposal for a Common Consolidated

¹ There exists some considerable literature eg Lee and Gordon (2005), OECD (2010) and Johansson (2008) underscoring that the corporate income tax is one of the most harmful taxes for economic growth.

² The administration is not bound by the proposal. It may decide to proceed with the proposal or to discard it.

³ <http://www.regjeringen.no/en/archive/Stoltenbergs-2nd-Government/Ministry-of-Finance/Nyheter-og-pressemeldinger/pressemeldinger/2013/nytt-offentlig-skatteutvalg/mandate-of-the-tax-commission.html?id=717833>

Corporate Tax Base (CCCTB).⁴ The CCCTB would present an alternative to the present tax system that builds upon the arms-length principle and where profits are taxed at source. The CCCTB proposal suggests that a corporation's total taxable profits would be added up on the EU-level before the tax base is to be allocated according to a formulary apportionment.

The recent cut in the corporate income tax rate was accompanied by new legislation that limits the tax deductibility of interest expenses to related parties.⁵ The legislative action is motivated by stating that it is necessary to strengthen the business climate in Sweden, to ensure that Sweden is attractive for national and international investments and that the Swedish corporate tax base needs to be protected against aggressive tax planning (Budgetpropositionen, 2013). The latter point was raised, among others, by a public report prepared by the Swedish tax agency (Skatteverket, 2012). These reports showed that the Swedish tax base was suffering from extensive profit shifting by firms abusing the tax deductibility of internal interest payments to related parties located in low tax jurisdictions. The budget bill states that the limits regarding interest deductions are expected to raise SEK 8.8 bn (Budget, 2013).

Motivated by the international attention that the corporate income tax and in particular the treatment of debt and equity capital has received this article reviews the arguments and measures proposed for increasing neutrality between debt and equity capital and how this might improve the efficiency of a corporate income tax system.⁶ There are a number of studies on the tax treatment of debt and equity capital in Sweden e.g. King and Fullerton (1984), Agell et al. (1998), Lindhe et al (2004), Sørensen (2008), and Sørensen (2010). All of these studies find that there are considerable differences in the marginal tax rates for investments that are financed with equity or debt. Södersten (2014) suggests that the effective marginal tax rate for debt financed investments is negative (-18.3 percent) while it is positive (20 percent) for equity financed investments. Given such differences in tax rates one would expect all firms to always finance their marginal investments with debt capital. However, there are both costs and benefits associated with debt. On the one hand, a higher level of debt may lead to costs of financial distress (eg bankruptcy costs). On the other hand, debt may discipline managers and reduce owners' monitoring costs. As a result, firms will tend to

⁴ EU (2011).

⁵ Kleist (2014) provides for a brief description of these rules.

⁶ Andersson et al (2013) investigate how a reform aiming at reducing the beneficial treatment of debt capital in Sweden might look like.

balance the benefits and the costs of debt. In addition, the debt capacity may vary between different companies and or sectors depending on the technology used in production. In general, firms that have more real assets might be able to take on more debt. Also older firms might be able to obtain bank loans easier than younger firms.

According to the literature differences in the treatment of debt and equity capital are likely to lead to inefficient allocation of resources and to welfare losses. First, the favorable treatment of debt financed investments, reflected e.g. in the negative marginal effective tax rate as reported by e.g. Sørensen (2010), leads to an inefficient mix of investments. There are too many investments that yield low returns that are financed with debt. On the other hand, there are too few investments financed with equity. Such an allocation violates the production efficiency theorem of Diamond and Mirrlees (1973).⁷ Sørensen (2010) estimates that the efficiency loss due to the inefficient investment mix to be approximately SEK 7.2 bn, or approximately 8.7 percent of the corporate taxes paid by widely held corporations in Sweden. Second, the favorable tax treatment of debt induces firms to increase their leverage. In particular, Sørensen suggests that differences in the tax treatment of debt and equity lead firms to increase their leverage to suboptimal levels. Indeed, De Mooij and Ederveen (2008) suggest that a one percentage point increase in the corporate tax rate increases the leverage of a representative firm by about 0.3 percentage points. Translated to the Swedish corporate tax rate of 22 percent this means that Swedish firms' debt is 6.6 percentage points higher, than it would be in a completely neutral system, due to the corporate tax. On the other hand, an increase in leverage increases the probability that a firm experiences financial distress. It is well documented that financial distress is costly.⁸ Sørensen (2010) estimates the costs of financial distress to around SEK 21.4 bn.⁹ In addition, there exists a considerable literature suggesting that higher levels of debt finance may increase the amplitude of the business cycle.¹⁰

The literature presented above suggests that the asymmetric treatment of debt and equity capital is likely to distort financing and investment decisions. However, many findings

⁷ Diamond and Mirrlees (1973) show that an efficient tax system does not interfere with firms' and individuals' investment and financing decisions.

⁸ An example is Almeida and Philippon (2007) and Graham (2000).

⁹ This equals approximately 0,6 percent of GDP 2010 or around 20 percent of corporate tax payments for the same year.

¹⁰ Some examples are Bernanke, Gertler och Gilchrist (1996, 1999). Berg, Hansen och Sehlin (2004) discuss the implications for Sweden. Brown et al. (2012) provide for insights how the financial accelerator may impact the financing of research and development.

presented in the literature are derived using abstract theoretical models. This article investigates if some of the effects prescribed in the theoretical literature, e.g. relatively lower tax payments of sectors that have high leverage, can be found in sector level data.

Some statistics are shown below but in general there seems to be differences in the taxes paid by different sectors and these differences could, according to the literature, be the result of the different sectors' ability to finance their investments with debt capital. In addition to these findings we also present a brief summary of the structure of the Swedish corporate tax receipts. The data exhibits patterns that are in line with the theoretical results of Sørensen (2010) and Mirrlees (2011) who suggest that the present tax system which basically allows for all interest costs to be deducted from a corporation's taxable income leads to considerable distortions.¹¹ Sørensen states that a tax reform that aims at aligning the tax treatment of debt and equity capital is likely to increase efficiency. A corporate tax system that is more neutral in its treatment of debt and equity capital is to allow corporations to deduct a calculated return on the equity invested in the business. This deduction, which is usually referred to as an allowance for corporate equity (ACE), parallels the deduction allowed for interest paid on a business' debt capital. Another possibility is to eliminate the favorable treatment of debt financed investments by disallowing corporations to deduct interest expenses. This is usually referred to as Comprehensive Business Income Tax - CBIT.

This article proceeds in the following manner. Section 2 presents a general overview over corporate income tax receipts and different measures of corporate tax rates in Sweden. Section 3 presents the data. Section 4 analyzes if there are systematic differences between different sectors corporate income tax payments. Section 5 concludes.

2 Corporate Tax Rates and Revenue

In 1991 a major reform of the Swedish tax system was instituted.¹² The reform termed tax reform of the century applied the strategy of rate cuts and base broadening in an “unusually thorough manner” (Agell et al. 1998). It introduced a dual income tax system where capital income is subject to a proportional tax while labor income is subject to a progressive income tax. The reform set the corporate tax rate at 30 percent. In difference to the corporate tax system before the reform, the new tax system applied a single rate and offered very few tax

¹¹ Since 2013 and 2009 there are restrictions on the possibilities to deduct interest payments to related parties (Budget 2013).

¹² The reform is described in, among others, Lodin (2011).

credits.¹³ The corporate tax rate was lowered in 1993 to 28 percent and thereafter in 2009, to 26.3 percent and, more recently, in 2013, to 22 percent. Figure 1 presents the Swedish corporate tax rate and the mean corporate tax rate for OECD member countries and the EU27. Figure 1 shows that until 2003 the nominal Swedish corporate tax rate was lower than the mean tax rate for the EU and until 2005 for the OECD countries. As late as 2012 the Swedish corporate tax rate was higher than the OECD average (23.2 percent) and EU average (23.5).

Figure 1 Corporate Tax Rates, Sweden, EU and OECD 2000-2013 (Data: OECD Tax Database och European Commission (2013) Taxation Trends in the European Union)

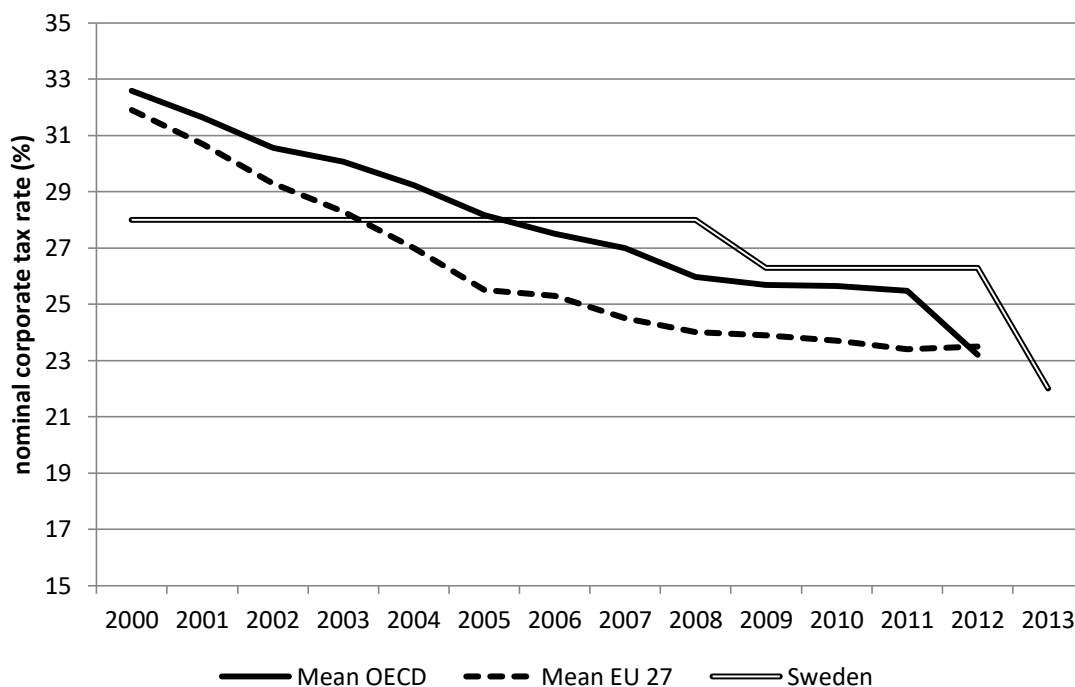


Figure 1 presents the formal corporate tax rates for Sweden and the arithmetic mean of the formal tax rates for all OECD countries and all EU countries.

Looking at the revenues from the corporate income tax we find that these were on average around 3.0 percent of GDP over the period 1995-2010. This is very close to the arithmetic mean of the EU27 countries. Figure 2 also underscores that corporate income tax revenues are, at least on the country level, rather volatile. Between 2000 and 2002 the corporate tax revenues decreased by nearly 50 percent. One reason for why corporate tax revenues have decreased at a slower pace than tax rates is that many countries have combined changes in the

¹³ The only significant deviations, besides the differences in the treatment of debt and equity capital, stem from the principle of neutrality that can be found in the Swedish corporate tax system are the rather generous depreciation schedule and the “periodiseringsfond”.

corporate tax rate and base broadening measures. This holds, as stated in Section 1, even for Sweden. The rate cuts in 2009 and 2013 were both accompanied by measures limiting corporations' interest deductions for loans to internal parties. Another possible explanation to the relative stable path of corporate tax revenues is that the economy has been more incorporated, i.e. the corporate sectors share of the total economy has increased.

Figure 2 Corporate income tax revenues 1995-2011, measures as percent of BDP. Sweden, Euro-members (EA-17) and EU countries (EU 27), Source: European Commission (2013) Taxation Trends in the European Union

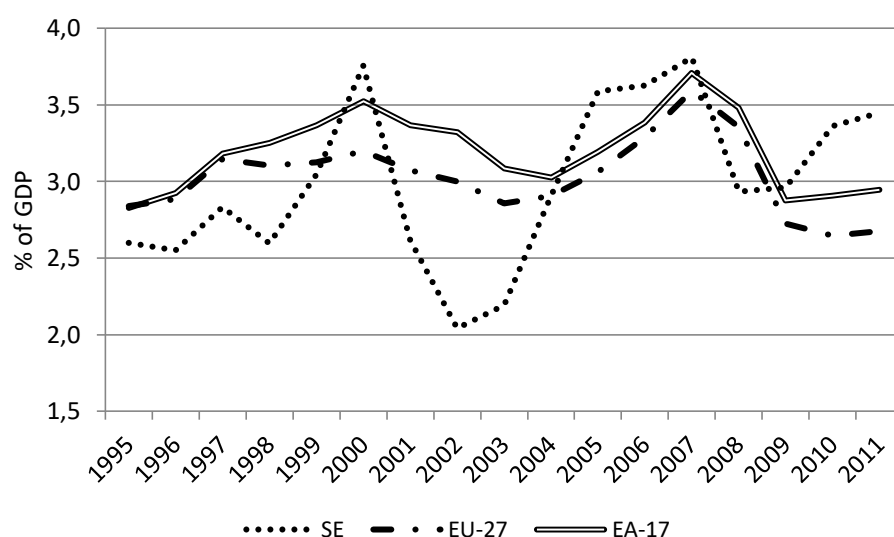


Figure 2 presents corporate income tax receipts as percent of GDP. EU27 (EA17) denotes the arithmetic mean of the formal corporate income tax rates for the 27 EU member states and the 17 member states of the Euro area

3 Data

This study uses comprehensive firm-level data on corporations' tax filings in Sweden. The data is from the Swedish tax revenue service and it spans from 2007 to 2011. We obtain the anonymized data through Statistics Sweden (SCB). Sweden employs a system where all firms incorporated in Sweden have a unique identifier. The data covers all firms incorporated as limited liability stock corporations in Sweden. The data is unconsolidated.¹⁴ For 2011 there are about 300 thousand of such firms. The data contains information on both firms' balance sheets and profit and loss statements. In addition, we also have, among others, information on firms' sector. While taxation in Sweden is done on a firm level firms are able to consolidate

¹⁴ Firms belonging to corporate groups use an "equity" method (Rajan and Zingales, 1995) to account for an affiliate's net assets. Under this method, these net assets are shown as investments in the parent firm's balance sheet.

their profits and losses for tax purposes. As a result the domestic parts of corporate groups are treated as a single firm in terms of taxes. To be able to transfer losses or profits across group members firms must own directly or indirectly more than 90 per cent of its related parties' shares. In order to reflect this possibility, we need to consolidate our data for some parts of our analysis into corporate groups. Data on corporate groups is provided by the Swedish corporation office (Bolagsverket). Consolidating firms into corporate groups also has the advantage that this will better reflect the fact that profitability, in a group taxation system, will likely depend on the groups' profitability rather than the profitability of an individual firm.¹⁵ To investigate the sector-specific differences between firms we use the industry classifications assigned by SCB to categorize our firms into 20 broad sectors. Table 1 presents an overview over the classification of firms.

Table 1 Classification of Sectors

sector_name	Swedish Standard Classification	
agriculture	Agriculture, forestry and fishing	A
communication infor	Information and communication	J
construction	Construction	F
culture	Arts, entertainment and recreation	R
education	Education	P
finance	Financial and insurance activities	K
gas prod	Electricity, gas, steam and air conditioning supply	D
health	Human health and social work activities	Q
hotel restaurant	Accommodation and food service activities	I
lacks sector	...	
law econ research	Professional, scientific and technical activities	M
manufacturing	Manufacturing	C
minerals	Mining and quarrying	B
public sector	Public administration and defence; compulsory social security	O
real estate	Real estate activities	L
rental aso	Administrative and support service activities	N
service computers	Other service activities	S
trade sales	Wholesale and retail trade; repair of motor vehicles and motorcycles	G
transport	Transportation and storage	H
water	Water supply; sewerage, waste management and remediation activities	E

Data from Statistics Sweden

Table 2 shows the number of firms by sector. The consolidation procedure leaves us with 228 thousand observations for 2007. This number grows to 304 thousand observations in 2011.

¹⁵ When aggregating firms into corporate groups we add up balance sheet and profit and loss statements across different firms that belong to a specific corporate group. Given that a corporate group can only belong to a single industry and that a corporate group can only have a single date of incorporation we allow the firm that has the largest number of employees to determine the group's industry classification.

The sector that in 2011 has the largest number of firms is *law econ research* (62 thousand). It is followed by *trade sales* (56 thousand) and *construction* (34 thousand). Among these three groups we find that the number of firms grows by around 40 % for both *law econ research* (plus 44 %) and *construction* (40%). The increase in the number of firms that belong to *trade sales* is considerably lower (plus 19 %). The last row shows simple concentration ratios with respect to the corporate income tax. Here we find that, on average, about 56 % of all firms pay corporate tax. We find that there is some variation in this number. In 2007 there are 60 % of firms paying corporate tax, for 2009 this number is equal to 52 % and 54 % in 2011.

Table 2 Number of firms 2007-2011 (thousands), source, SCB FRIDA database

sector_name	Number of Firms				
	2007	2008	2009	2010	2011
agriculture	6.20	6.49	6.40	6.93	7.33
communciation					
information	13.09	14.77	16.55	16.23	19.35
construction	24.04	26.43	27.68	29.03	33.72
culture	4.18	4.61	4.84	5.10	6.01
education	3.21	3.57	3.88	3.93	4.77
finance	6.61	7.34	9.56	7.70	10.44
gas prod	0.50	0.60	1.03	0.72	0.83
health	6.49	7.34	8.00	8.44	10.16
hotel restaurant	8.25	9.10	10.07	9.66	11.12
lacks sector	6.89	2.06	1.87	16.71	9.83
law econ research	43.15	47.94	51.80	53.22	62.15
manufacturing	20.47	21.36	23.61	22.28	22.89
minerals	0.33	0.36	0.41	0.38	0.39
public sector	0.03	0.03	0.04	0.03	0.03
real estate	14.88	16.53	23.52	16.75	19.05
rental aso	7.70	8.52	9.97	9.17	10.80
service computers	2.93	3.25	3.47	3.63	4.52
trade sales	47.19	49.84	54.26	52.06	56.22
transport	11.61	12.33	12.88	12.91	13.72
water	0.45	0.51	0.65	0.54	0.63
Total	228.21	242.94	270.46	275.39	303.96
Ratio of tax payers	60%	58%	52%	55%	54%

Figure 1 shows the number of firms/corporate groups in each sector. Classification from statistics Sweden. Ratio of tax payers shows the ratio of firms that pays more than sek 1000 in corporate income tax. Consolidated data.

Table 3 uses data from SCB to present information on sectors' employment. The largest sectors by employment are *manufacturing* 21 % of all employment in the corporate sector, followed by *trade sales* (18 %) and *construction* (10 %). This table also shows that all sectors increase employment with the exception of manufacturing. Between 2007 and 2011 we find that total employment grows from 2.51 million to 2.67 million. This is an increase by 6 %.

Table 3 Employment in the corporate sector

	Employment (% of corporate sector)					Employment Growth
	2007	2008	2009	2010	2011	
agriculture	1%	1%	1%	2%	2%	17%
communication infor	6%	6%	6%	6%	6%	4%
construction	9%	9%	10%	10%	10%	17%
culture	1%	1%	1%	1%	1%	16%
education	2%	2%	2%	2%	2%	44%
finance	3%	3%	3%	3%	3%	5%
gas prod	1%	1%	1%	1%	1%	2%
health	4%	4%	5%	5%	6%	45%
hotel restaurant	4%	4%	4%	4%	4%	21%
lacks sector						
law econ research	7%	8%	8%	8%	8%	15%
manufacturing	25%	24%	22%	21%	21%	-13%
minerals	0%	0%	0%	0%	0%	10%
public sector						
real estate	2%	2%	2%	2%	2%	6%
rental aso	6%	7%	7%	7%	7%	27%
service computers	1%	1%	1%	1%	1%	23%
trade sales	18%	18%	18%	18%	18%	3%
transport	8%	8%	8%	8%	8%	1%
water	1%	1%	1%	1%	1%	17%
Total Employment (m)	2.51	2.59	2.53	2.56	2.67	6%

Data from SCB, *Basfakta företag enligt Företagens ekonomi efter näringsgren SNI 2007*. Finance from FRIDA database. We exclude the category public sector, which eg includes international organisations.

Table 4 presents the accumulated tax payments on a sector level.¹⁶ The four largest sectors are *manufacturing* (tax payments are between 27 % and 22 % of all corporate tax payments), *trade sales* (between 15 % and 20 %), *finance* (between 9% and 18%) and *construction* (between 5 % and 11 %) Table 4 also presents the accumulated tax payments made by the 30 and 100 largest tax payers. We find that that 30 (100) largest tax payers pay about SEK 34.7 bn (SEK 50.7 bn) in corporate tax. Tax payments from the 30 largest employers amount, on average, to SEK 13 bn. However, due to the financial crisis this number exhibits large considerable variation. In 2008 the 30 largest firms in terms of employment paid only SEK 5.5 bn in corporate income tax. In 2011 this number was equal to SEK 21.9 bn.

¹⁶ A similar table can be found in Wahlberg (2012).

Table 4 Corporate income tax payments by sector and size (fraction)

Corporate income tax payments by sector (fraction of total corporate income taxes paid in Sweden)	2007	2008	2009	2010	2011
agriculture	1%	1%	1%	1%	1%
communication infor	6%	4%	4%	7%	5%
construction	6%	11%	5%	10%	10%
culture	0%	0%	0%	0%	1%
education	0%	0%	1%	0%	0%
finance	12%	9%	19%	17%	18%
gas prod	3%	3%	8%	3%	2%
health	1%	2%	1%	2%	1%
hotel restaurant	1%	1%	1%	1%	1%
lacks sector	1%	0%	0%	1%	0%
law econ research	11%	9%	10%	6%	7%
manufacturing	27%	23%	19%	21%	22%
minerals	2%	3%	0%	4%	4%
public sector	0%	0%	0%	0%	0%
real estate	5%	6%	6%	5%	3%
rental aso	2%	3%	6%	2%	2%
service computers	0%	0%	1%	0%	0%
trade sales	17%	20%	15%	19%	19%
transport	2%	2%	2%	2%	2%
water	1%	0%	0%	0%	0%
Total (sek bn)	95.7	74.6	84.1	104.2	100.1
Tax payments: largest firms					
Top 30 tax (sek bn)	33.9	23.5	31.2	45	39.7
Top 100 tax (sek bn)	46.1	30.9	39.9	57.5	50.7
Top 30 empl (sek bn)	9.6	5.5	11	21.9	17.0

Consolidated data. Data from FRIDA.

4 Analysis

Section 4 investigates if there are systematic differences between sectors' tax payments and their income. It also studies how different sectors compare in their use of debt capital. Following standard finance textbooks, i.e. Bodie and Merton (2000), we proxy firm's income before taxes using a variable called *ebit* (earnings before interest and taxes). We use firms' tax filings to calculate the *ebit* measure. We obtain *ebit* as the difference between corporations' declared income and its interest payments. If *ebit* is negative we set *ebit* to zero. Table 5 presents *ebit* on a sector level. More precisely, column (1) shows each sector's mean fraction of the total *ebit* produced by the corporate sector in Sweden for 2007-2011. However, given that *ebit* is not meaningful measure for financial corporations we exclude these firms when providing statistics with regard to *ebit*.¹⁷ To allow for a comparison between *ebit* and *tax payments* we also provide each sector's fraction of total tax payments. Again, this ratio

¹⁷ Eriksson and Högberg (2013) discuss financial sector taxation.

disregards the financial sector. Looking at column (1) we find that the largest sectors in terms of *ebit* are *manufacturing* 27.4 %, *trade sales* 18.3 % and *construction* which stands for 9.1 % of total *ebit* and *real estate* 9.5%. Looking at these sectors' fractions of the total corporate tax payments which we present in column (2) we find that these are rather close to these sectors' fraction of total *ebit*.¹⁸ The main exception when looking at these four sectors is the *real estate* sector. Here, we find that this sector's tax payments are only equal to 5.8% of total tax payments. Below, we show that this difference can, to some extend, be explained by the sector's use of debt capital.

By looking at the ratio of a sector's *tax payments* and *ebit*, we refer to this ratio as *tax/ebit_j*, presented in column (3), we learn that there are considerable differences between the sectors. *tax/ebit_j* ranges from 12.6 percent (*real estate*) to 27.9 percent (*service computers*). We find that *tax/ebit_j* is greater than 20 % for *manufacturing* (20.5 percent), *trade sales* (24.6percent) and even *construction* (22.6 percent). A possible interpretation of this finding is that the effective tax rate on *ebit* faced by a typical firm that belongs to sector *j* differs considerably between sectors. Given that interest payments are tax deductible we now investigate if the pattern observed above can be explained by looking at sectors' usage of debt and equity capital. Column (4) shows the median of sector *j*'s *leverage* (ratio of debt to total assets) and column (5) the third quartile of *leverage*.¹⁹ Colum (4) presents what could be the leverage of a representative firm from a given sector. We see that there are some differences between the sectors. Leverage is highest for the *real estate* (median: 65percent), manufacturing (47 percent), trade sales (46 percent). Given that it is primarily fixed assets that allow companies to finance themselves with debt capital we investigate into SCB's corporate asset data. Here, we find that manufacturing is the largest, nearly 30 percent of all assets while *real estate* sector is second with 18.2 percent of all assets. *Trade sales* has considerably less fixed assets than would be expected from the sector's *ebit*. Indeed this sector which stands for 18.3 percent of all *ebit* has only 11.4 percent of all assets in the corporate sector.

¹⁸ The numbers for manufacturing, trade sales and construction are: 26.6%, 21.6% and 9.8 %.

¹⁹ We calculate debt following Rajan and Zingales (1995).

Table 5 Sectors' fraction of EBIT, tax payments and total assets. and corporate income tax payments by sector: 2011

	1	2	3	4	5	6
	EBIT	Tax Payments	Tax/ebit	Leverage	Leverage	Total Assets
	% of total	% of total	% of EBIT	Debt (%) of total assets	Debt (%) of total assets	% of total
	Mean 07-11	Mean 07-11	Mean 07-11	Median 07-11	3 rd quartile 07-11	Mean 2007-11
Data source	FRIDA	FRIDA	FRIDA	FRIDA	FRIDA	SCB
agriculture	1.3%	1.2%	19.3%	52%	72%	3.4%
communication infor	6.3%	6.4%	21.5%	44%	64%	7.0%
construction	9.1%	9.8%	22.6%	46%	64%	2.9%
culture	0.5%	0.5%	22.3%	49%	73%	0.4%
education	0.5%	0.5%	22.1%	48%	70%	0.2%
gas prod	5.3%	4.5%	17.4%	61%	83%	8.3%
health	1.8%	1.7%	20.1%	41%	62%	0.8%
hotel restaurant	1.2%	1.3%	22.1%	60%	82%	0.8%
law econ research	9.5%	10.3%	22.6%	42%	63%	9.8%
manufacturing	27.4%	26.6%	20.5%	47%	65%	29.2%
minerals	2.5%	3.1%	26.6%	44%	66%	0.8%
real estate	9.5%	5.8%	12.6%	65%	88%	18.2%
rental aso	3.3%	3.7%	22.3%	51%	71%	2.6%
service computers	0.3%	0.4%	27.9%	52%	72%	0.3%
trade sales	18.3%	21.5%	24.6%	46%	67%	11.4%
transport	2.7%	2.5%	18.8%	55%	73%	3.3%
water	0.5%	0.5%	19.5%	52%	68%	0.4%
Total	100.0%	100.0%				100.0%

ebit is calculated by adding interest expenses to a firms' taxable result. Table shows sector's part part of total ebit for corporate sector. Table does not consider negative ebit.

Tax_ebit is the ratio of corporate income tax payments to ebit. Data from the Swedish corporate database (FRIDA). Tables excludes financial sector as both interest income and interest expense are central for the sector's business model. Table also excludes public sector and firms that lack sector.

Looking at the total of the corporate sector we learn that *tax/ebit* is on average 23.6 percent (2007), 19.8 percent (2008), 18.8 percent (2009), 22.8 percent (2010) and 20.2 percent (2011).²⁰ The corporate tax rate was 28 percent until 2009 and 26.3 percent thereafter. Taken at face value, disregarding distributional and efficiency effects among sectors and without considering the effect of limits on the interest rate deductions introduced in 2013, a simple calculation suggests that this amounts to 6.1 percentage points of the corporate tax rate. In this example, the “value” of this fully deductible interest rate is 6.1 percentage points.²¹

The data presented in Table 5, columns (6) and column (7) allows running a simple regression to test whether a sector’s use of debt capital can explain its tax payments. We use *leverage* to denote a sector’s use of debt capital and *tax_ebit* to measure a sector’s tax payments.

We consequently run the following regression

$$(1) \quad Tax_ebit_j = c + \beta * leverage_j + \varepsilon_j$$

Finding that the regression yields significant results would indicate that a sector’s *leverage* can explain a sector’s *tax/ebit*.²² Running our regression we obtain the following result:

$$(2) \quad Tax_ebit_j = 0.36^{***} - 0.30^{***} * leverage_j + \varepsilon_j^{23}$$

The F-statistic is 7.8 and R^2 is 34 percent. The regression indicates that there is a significant relationship between a sector’s use of debt capital and its corporate tax payments. The result suggests that a sector by increasing its leverage from 45 percent to 65 percent can decrease its corporate tax payments measured as the tax to ebit ratio (*tax/ebit*) by six percentage points from 22.5 percent to 16.5 percent. We present the regression and data in Figure 3.

²⁰ These measures are weighted by sectors’ *ebit* and tax payments.

²¹ We would expect the revenue effect to be somewhat smaller when one considers the effect of the interest deduction limits introduced in 2013. Considering the calculations made in Budgetpropositionen (2013) one might have to adjust the 6 percent to 4 percent.

²² Given the rather low number of observations (17) these results need to be treated with some caution. However, we obtain similar results when running regressions using firm level data.

²³ *** denotes significance at the 1%-level.

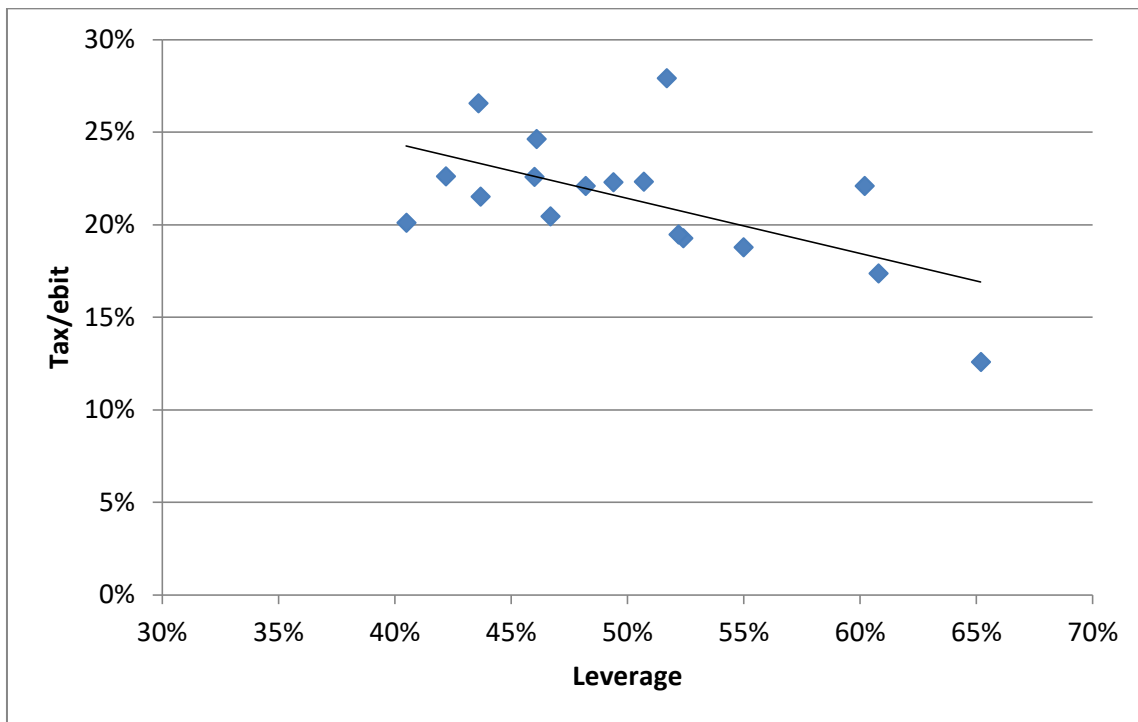
Figure 3 Tax to ebit ratio and median leverage (Sector level data)

Figure 3 presents the relation between tax/ebit_j and median leverage $_j$. Observations (j) mark sectors. Data is found in Table 5, columns 3 and 4. Line marks the linear regression presented in equation (2).

Summing up, the results presented in this section support the findings by, among others, Sørensen (2010) or Graham (2000) who suggest that there are differences in the effective tax rate that different firms face on their comparable incomes.

5 Conclusion

Standard literature suggests that the typical corporate tax system discriminates against equity financed investments. Interest costs are fully deductible while the costs associated with equity finance are not. Given that sectors differ with respect to their utilization of tangible assets that can be used to secure loans their ability to use debt finance varies. Consequently, sectors can be expected to differ with respect to how much of their income, ie calculated as *ebit* is to be paid as corporate income taxes. The differences are strongly related to a sector's use of debt capital. We find support for this this central result from the literature on the corporate taxation. The data be presented in this paper allows for a simple calculation indicating that the revenue effect of corporate interest rate deductions amount to approximately 6 percentage

points. If one would abolish all interest rate deductions in the corporate sector the corporate income tax could be cut by 6 percentage points without losing any revenue in static terms. De Mooij and Devreux (2011) analyze the effect that such a reform would have for Sweden. They find that such a reform, introduced unilaterally would be beneficial for Sweden. However, while such a reform might be feasible in theory, it is beyond the scope of this paper to investigate if such a reform would be desirable.

References

- Agell, Jonas, Englund, Peter and Södersten, Jan (1998). *Incentives and Redistribution in The Welfare State. The Swedish Tax Reform*. London: MacMillan Press.
- Almeida, Heitor, and Thomas Philippon (2007). The risk-adjusted cost of financial distress. *The Journal of Finance*, 62: 2557-2586.
- Andersson, Krister, Peter Ericson and Johan Fall (2013). European corporate tax policy and financial structure of corporations– with special reference to Sweden, Discussion paper for the 15th Annual European Conference, Swedish Network for European Studies in Economics and Business
- Berg, C., J. Hansen och P. Sehlin (2004). The financial accelerator and corporate investment, *Economic Review*, 2: s. 23-46.
- Bernanke, B., M. Gertler och S. Gilchrist (1996), The Financial Accelerator and the Flight to Quality”, *Review of Economics and Statistics*, 78, 1-15.
- Bernanke, B., M. Gertler och S. Gilchrist (1999), ”The Financial Accelerator in a Quantitative Business Cycle Framework”, i Taylor, J. B. och M. Woodford (red.), *Handbook of Macroeconomics*, vol. 1(3), Amsterdam: North-Holland.
- Bodie, Zvi and Robert Merton (2000). Finance.– Prentice Hall. *Upper Saddle River, NJ*, 2000.
- Brown, J. R., Martinsson, G., & Petersen, B. C. (2012). Do financing constraints matter for R&D? *European Economic Review*, 56: 1512-1529.
- Budgetpropositionen (2013). Budgetpropositionen 2012/13.
- Diamond, Peter A., and James A. Mirrlees (1971). Optimal taxation and public production I: Production efficiency. *American Economic Review*: 8-27.
- EU (2011)Proposal for a Council Directive on a Common Consolidated Corporate Tax Base (CCCTB), SEC (2011) 315 final.
- Eriksson, Rickard and Peter Höglund (2013), General Economic Report, Taxation of the financial sector, *Nordic Tax Journal* 1, 49-67.

Graham, John (2000). "How big are the tax benefits of debt?." *The Journal of Finance* 55: 1901-1941.

Johansson, A., C. Heady, J. Arnold, B. Brys and L. Vartia (2008), "Tax and Economic Growth", OECD Economics Department Working Papers, No. 620, OECD, Paris

Kleist, David (2014) Corporate Tax in Sweden, *Nordic Tax Journal*. This volume

King, Mervyn A., and Don Fullerton (1984) The taxation of income from capital: A comparative study of the United States, the United Kingdom, Sweden, and Germany." *NBER Books* (1984).

Lee, Young, and Roger H. Gordon. "Tax structure and economic growth." *Journal of public economics* 89.5 (2005): 1027-1043.

Lindhe, Tobias, Jan Södersten, and Ann Öberg. "Economic effects of taxing different organizational forms under the Nordic dual income tax." *International Tax and Public Finance* 11.4 (2004): 469-485.

Lodin, Sven-Olof (2011). The making of tax law : The development of the Swedish tax system.

De Mooij, R. A., & Devereux, M. P. (2011). An applied analysis of ACE and CBIT reforms in the EU. *International Tax and Public Finance*, 18(1), 93-120.

Södersten, Jan (2014). Bolagsbeskattningens incitamentseffekter, Bilaga till Företagsskattekommitténs betänkande.

Sørensen, P. B. (2008). The taxation of business income in Sweden. *Report prepared for the Swedish Ministry of Finance*.

Sørensen, P. B. (2010). *Swedish tax policy: Recent trends and future challenges*. Finansdepartementet, Regeringskansliet.

OECD(2010), Tax Policy and Economic Growth, OECD Tax Policy Studies, No 20

OECD (2013), Addressing Base Erosion and Profit Shifting, Paris.

Skatteverket (2012), Delrapport - Skatteplanering med ränteavdrag i företag inom välfärdssektorn,

<http://www.skatteverket.se/download/18.71004e4c133e23bf6db800076711/1335443101450/rappport20120427-+Skatteplanering+med+r%C3%A4nteavdrag.pdf>

Wahlberg, Katrin (2012) Företagsbeskattning, Business taxation, Skatter i Sverige 2012, Skattestatistik Årsbok, www.skatteverket.se/download/18.2b543913a42158acf800016970/1354883531590/15215.pdf